



Uncontrolled Copy when printed
CV-004789-WI, Revision 1



THE COVVI HAND

Glove Replacement Guide

SAFETY PRECAUTIONS

The glove and covers for the COVVI Hand should only be replaced following the enclosed instructions, and no other disassembly can be performed unless you have received training by a COVVI representative and received a certificate. COVVI Ltd. and COVVI USA INC have the right to void the warranty of all products that have any type of modification or damage caused by any unauthorised or untrained personnel.

- Damage caused during replacement of a glove by persons other than a COVVI representative is not covered by warranty unless the damage was inherent to the glove prior to receipt.
- Do NOT operate the COVVI Hand without the integrated glove as this could result in increased electromagnetic emissions or decreased electromagnetic immunity and result in improper operation.
- Do NOT use the COVVI Hand if a failure occurs, as it could cause damage to your patient or others.
- Do NOT interfere with the ESD shield. This is to protect the hand.
- Do NOT attempt to clean the internal components of the COVVI Hand.
- Cleaning of the glove should be limited to mild soap and a soft damp cloth. Do NOT use solvents, abrasive cleaners, etc.

DISPOSAL

The glove and its components must be disposed of in accordance with local regulations. There are no hazardous substances.

INFORMATION ICONS



STOP

Care Point Quality Control Check



Wear PPE

Personal Protective Equipment

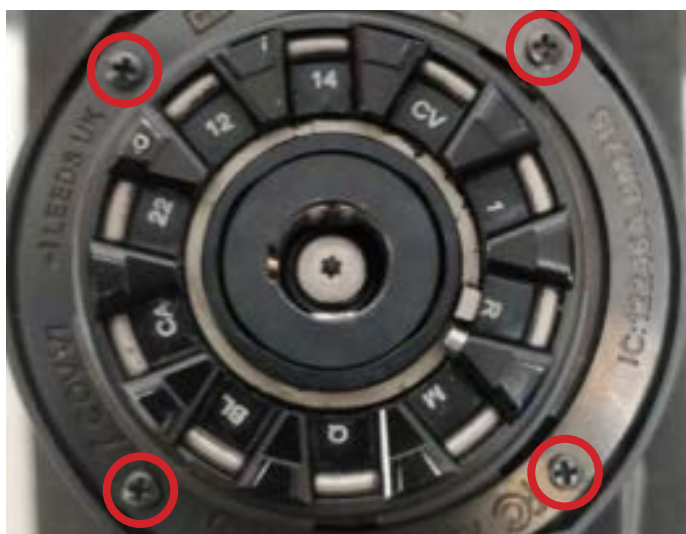
PRECAUTION - COMPONENT VERSION

Please use this guide if your wrist plate looks like the following:



If your product has a pre-2023 style wrist plate with ID clip, then please see the alternate Glove Fitment Guide (v1.0.0) linked in the 'User Guides Hub' section of our website.

<https://www.covi.com/user-guides/>



GLOVE KIT COMPONENTS

The following pieces are included in the Glove Replacement Kit:

- Metacarpus Cover
- Glove
- Wrist Retention Ring
- M2x5mm CSK
- M2x6mm CSK
- M2x8mm CSK
- M2x4mm Self Tapping Screw

EQUIPMENT REQUIRED



Interchangeable Screwdriver - PH00



Torque Driver - 0.1-0.6Nm



Plastic Tweezer



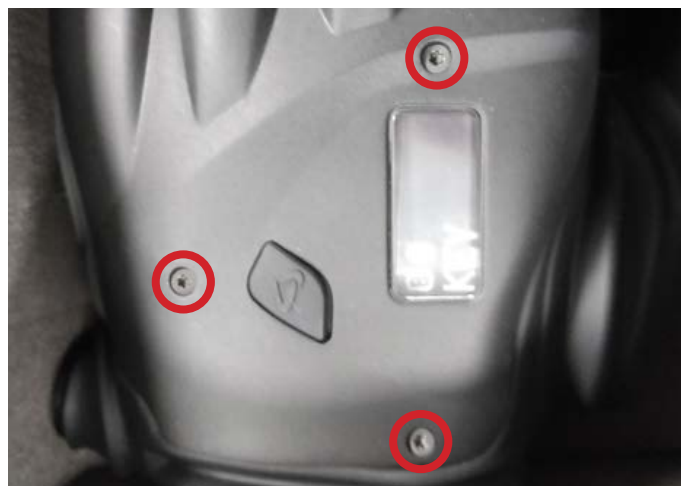
OPS100 Silicone Adhesive - Medium Only

GLOVE REMOVAL

Parts/Tools Required:

Torque Driver / PH00 Screwdriver

- 01 Remove three screws from back of the hand using a PH00 Screwdriver and Torque Driver and lift off metacarpus cover.



Metacarpus screw locations

Parts/Tools Required:

PH00 Screwdriver

- 02 Remove four screws from the hand Wrist Plate securing the wrist portion of the glove using a PH00 Screwdriver.



Wrist retention screw locations

GLOVE REMOVAL

Parts/Tools Required:

Plastic Tweezer

03

Separate the Glove from the Wrist Retention Ring. This is done by unhooking the Glove from the four screw positions.

Use blunt plastic tweezers to prevent tearing the glove.



Parts/Tools Required:

None

04

Slide the Wrist Retention Ring off the base of the hand. It can be gently squeezed and pushed off one side first to allow the ring to be slid off over the wrist plate.



GLOVE REMOVAL

Parts/Tools Required:

None

- 05 Unhook glove from over the button and gently begin to pull the glove up over the hand.



Parts/Tools Required:

None

- 06 Near the middle of the palm release the thumb by pulling the Glove up and over so the thumb springs out.



GLOVE REMOVAL

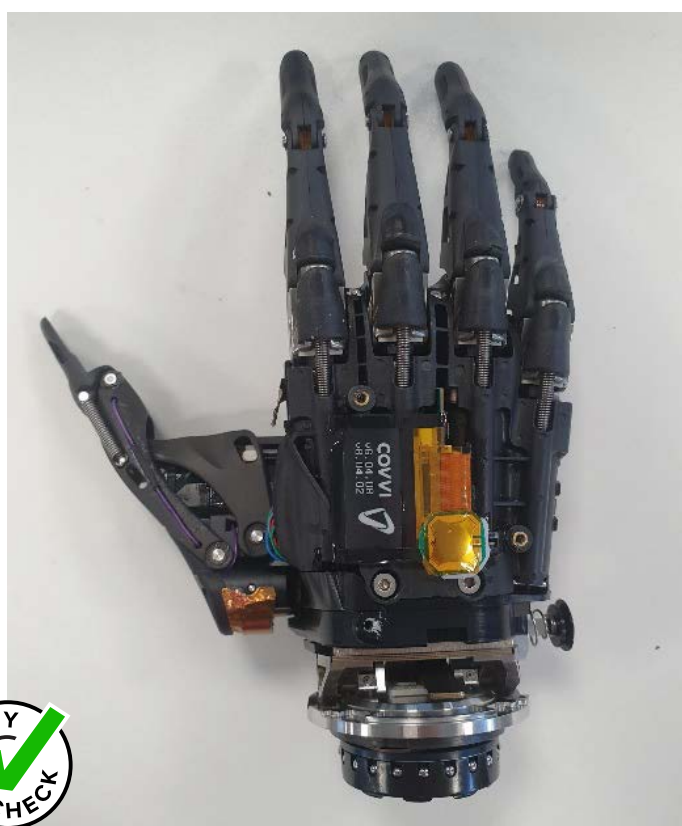
Parts/Tools Required:

None

Pull the fingertips of the glove up so they release from the recesses in the fingers.

07 Continue sliding the glove up from the palm upwards until the glove is fully removed from the hand.

Check the hand to ensure nothing has been dislodged during the process.



GLOVE FITMENT

Parts/Tools Required:

None

Orientate the glove to match the position of the COVVI Hand and place fingers into the wrist opening.

01

Stretch the glove over the fingers and GENTLY slide down.

When the glove reaches the middle of the palm, check the fingers are aligned with the appropriate place on the glove.

Be careful not to catch the edge of the screen.



GLOVE FITMENT

Parts/Tools Required:

None

- 02 Bend the thumb inwards and stretch the glove over the top, lining the tip of the thumb with the opening in the glove.



GLOVE FITMENT

Parts/Tools Required:

None

03

Slide the glove down towards the wrist, carefully checking the glove does not snag on anything on the way.

Push each of the fingertips and the thumb tip down onto the end of the digits. They should slot into place and remain there.



Parts/Tools Required:

None

04

Push button through the buttonhole in the glove.

Ensure glove is hooked around the lip of the button.



SILICONE APPLICATION - MEDIUM ONLY

01

Parts/Tools Required:

OPS100 Silicone Adhesive

MEDIUM ONLY - Carefully lift the edge of the glove window and carefully apply a line of **OPS100 Silicone Adhesive** on the face Medium Chassis Spacer as marked in the image below.

Do not get any of the adhesive on the screen. If any adhesive ends up on the screen immediately wipe away.



02

Parts/Tools Required:

None

MEDIUM ONLY - Gently place the edge of the glove window back down onto the Medium Chassis Spacer. Gently press the window edge down onto the adhesive and hold for five minutes.

Do not get any of the adhesive on the screen. If any adhesive ends up on the screen immediately wipe away.



SILICONE APPLICATION - MEDIUM ONLY

Parts/Tools Required:

OPS100 Silicone Adhesive

03

MEDIUM ONLY - Apply a small bead of **OPS100 Silicone Adhesive** around the screen cut-out and the screw holes in the glove.

Do not get any adhesive on the screen or areas that will not be covered by the Metacarpus cover once fitted.



METACARPUS FITMENT

Parts/Tools Required:

Metacarpus Cover

01

Position the Metacarpus Cover, aligning the screw and glove holes.

Hand must be kept in **non-opposed position** during curing time



Parts/Tools Required:

M2x5mm CSK / M2x6mm CSK / M2x8mm CSK / Torque Driver / PH00 Screwdriver

02

Using a PH00 Screwdriver and Torque driver, secure the Metacarpus using the screws provided as shown in the images below.

Small: 3 x M2x5mm CSK

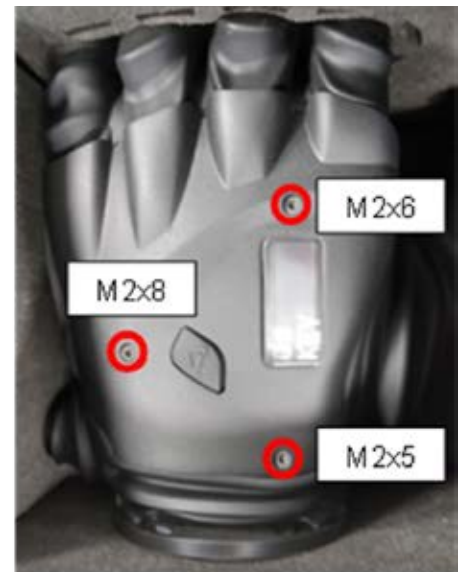
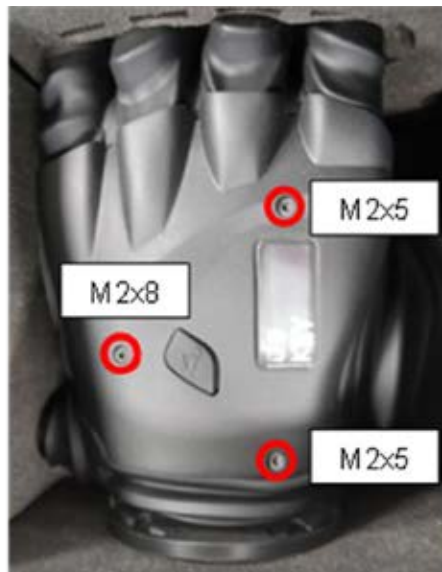
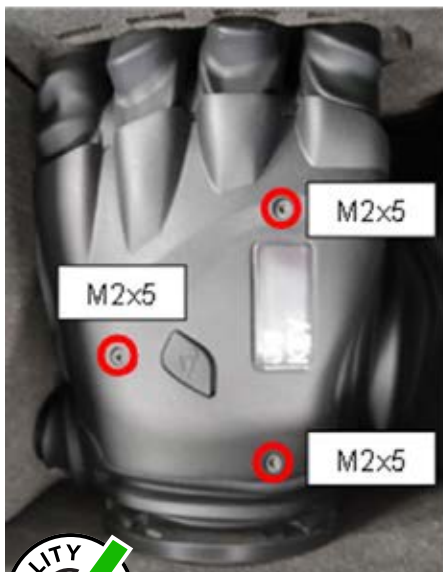
Medium: 2 x M2x5mm CSK, 1 x M2x8mm CSK

Large: 1 x M2x5mm CSK, 1 x M2x6mm CSK, 1 x M2x8mm CSK

Tighten up to 0.15Nm

Do not overtighten the lower screw as it can impact the thumb rotation.

If you have a medium hand where silicone has been applied, please leave to cure in the non-opposed position for one hour before proceeding.



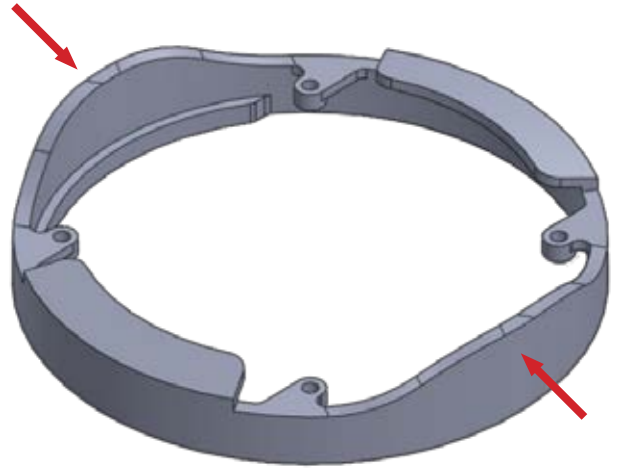
RETENTION RING FITMENT

Parts/Tools Required:

Wrist Retention Ring

01

Hook the Wrist Retention Ring over the wrist plate and first lip of the Glove with the flanges pointing upwards towards the fingertips.



Parts/Tools Required:

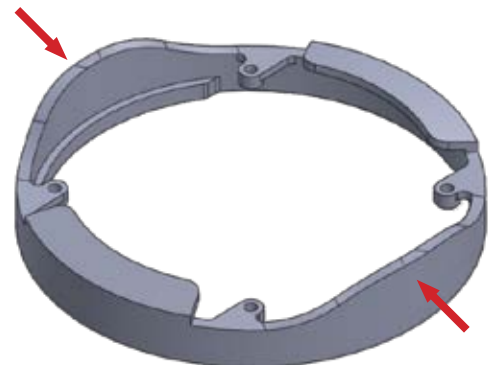
Plastic Tweezer

02

Using blunt tweezers, hook the small holes in the wrist of the Glove over the bosses in the Wrist Retaining Ring.

- Check the side flaps of the Wrist Retaining Ring are over the lowest ridge of the glove and fitment matches the images below.
- The Wrist Retaining Ring should sit into the pockets on the glove.

Use blunt tweezers to prevent tearing the glove.



RETENTION RING FITMENT

Parts/Tools Required:

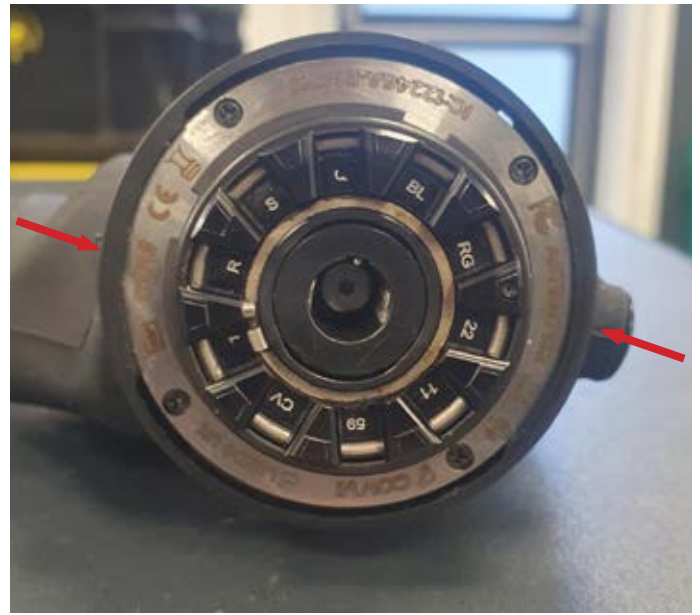
M2x4mm screws / Torque Driver / PH00 Screwdriver

03

Secure the Glove and Wrist Retention Ring using M2x4mm screws from the underside of the wrist plate until the thread of the screw starts to appear through the top of the Wrist Retention Ring.

- Pressing down on the tab of the Wrist Retention Ring that you are screwing the screw into makes it easier to retain the glove correctly during the screw fitment.

Ensure the Wrist Retention Ring is over the edge of the wrist plate.



FINAL CHECKS

Parts/Tools Required:

None

Check the appearance of the glove.

01

- Check the glove is secured correctly by the retaining ring by flexing the wrist and checking the glove is still held securely as shown. The glove should not pull out from under the retaining ring.
- Once the glue has cured the edge of the cover should look like the following image when moved into the opposed position.



Parts/Tools Required:

None

02 Check thumb can correctly be rotated between opposed and non-opposed position.

If this is not operating correctly screws have been overtightened, please slightly loosen the lower metacarpus screw until function is operational.

Parts/Tools Required:

None

03 Check the back button is working correctly and a click is heard when pressed.

If this is not operating correctly screws have been overtightened, please slightly loosen screws until function is operational.



[instagram.com/covi](https://www.instagram.com/covi)



twitter.com/covi



[facebook.com/covi](https://www.facebook.com/covi)



[linkedin.com/company/covi](https://www.linkedin.com/company/covi)



Uncontrolled Copy when printed
CV-004789-WI, Revision 1

Phone: +44 (0)20 3949 9500
Email: customerservice@covvi.com
Website: www.covvi.com



COVI Ltd.,
Unit 4 (Direct House),
Quayside Business Park,
Leeds, LS10 1DJ

v1.1.0 | September 2024